

TORRANCO

PRIMARY SCHOOL



Teachers: Ashleigh Murray, Erika Harrison

Support Staff: Rana Begum, Emma Ryan, Paola Alam, Rushna Udin

Welcome to the Reception
Meet the Team Meeting

Here to Help – Senior Leadership



Executive Headteacher

Helen Bruckdorfer

Head of School

Holly Churchill



Matthew Western
Leader of Learning



Hannah Blausten
Leader of Learning



Laura Lien
Director of Inclusion



Hannah Long
SENCO



Rose O'Brien



Justin Bioletti



Sorrel
Evangelou

Here to Help – Admin Team



Maria Lewis: School Business Manager

Rina Kastrati: Pupil Data Officer

Ioanna Chrysafis: Finance Officer and Head of School Support

Ashleigh Jones: Child and Family Support Worker

Inclusion/SEN Team



Laura Lien is our Director of Inclusion across the federation and Hannah Long is the SENCo at Torriano. Natalie Reilly supports as Deputy SENCo.

You will know Catriona Hale as our Pastoral Care Lead and Bernadette Biggs is our Community Liaison Officer

We welcome Finn Keatage as our inclusion support assistant, Ryan Carroll as our SEN assistant and Rachel Clancy from Brecknock as our LRB assistant.

Inclusion



SEND Information Report

1 What school leaders and governors do to make sure that all children feel welcome, included and achieve their potential?

2 How do we develop the skills, knowledge and expertise of Torriano staff?

Medical Needs



Medical Needs Policy

Torriano Primary School

[SEND Information Report - Torriano Primary School](#)

Information about the support we offer children with additional needs can be found in our school Local Offer on the school website.

Our medical needs policy is available on the school website. If your child requires any medicines in school, you can find further information there.

Safeguarding

Please see the school website for our full safeguarding policy

Designated Safeguarding Leads



Designated Safeguarding Lead

Laura Lien - Director of Inclusion

Contact: 02074240202



Deputy Safeguarding Lead

Helen Bruckdorfer – Executive Head Teacher

Contact: 02074240202



Deputy Safeguarding Lead

Catriona Hale - Pastoral Care Leader

Contact: 02074240202



Deputy Safeguarding Lead

Natalie Reilly – Deputy SENCO

Contact: 02074240202

Nominated governor for safeguarding:

Name: Alex Gardiner and Paul Smith

Contact details: 02074240202

Local Authority Designated Officer (LADO):

Name: Sonia Forbes

Contact details: 020 7974 4556

Camden MASH

Contact details: 020 7974 3317 (9am to 5pm)

Out of Hours Contact Details: 02079744444

Islington MASH

Contact details: 02075277400 (9am to 5pm)

Out of Hours Contact Details: 02072260992

Together, our Future Starts Here



We will further develop our oracy and STEAM curriculum in our ambition to offer a horizon broadening, inclusive and creative curriculum.

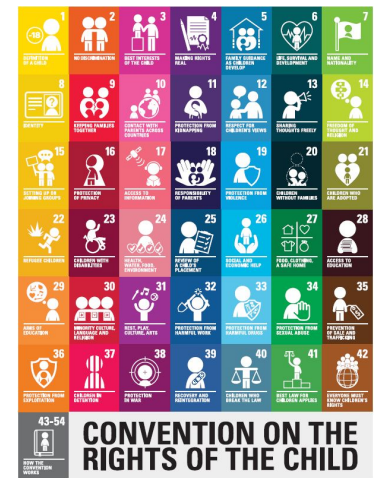
We are going to continue with our whole school theme 'Together, Our Future Starts Here' which highlights how we will be working collaboratively across the Brecknock and Torriano partnership.

Our ambition is to increase our capacity to achieve SDG 17, Partnership for the Goals.





Early Years



Torriano Primary is proud to be a Gold Rights Respecting school.





HORRIANO

Attendance



8:50am: School gates open

8:55am: School starts

9am: Lessons start in class



Ted and Earl will be on the lookout for excellent attendance and prompt school arrival this term. Look out golden attendance tokens on the gate!

All children are expected to attend school every day unless they are unwell. Please notify school if your child is absent for any reason. Last year, our attendance was significantly below our 95% attendance target. We encourage you to monitor your child's attendance using Arbor to ensure their attendance remains excellent. Please ensure you download the Arbor App to access your child's profile and complete payments.

Whenever possible, medical appointments should be made outside of the school day.

Behaviour Policy

 Who do I want to be? 		
Caring 	Respectful 	Curious 

1 2 3 Magic

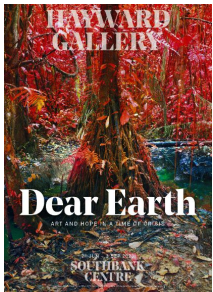
CAMDEN DARWIN200



STEAM

SCIENCE, TECHNOLOGY, ENGINEERING, ARTS AND MATHEMATICS

Dear ...



Inspired by the recent Dear Earth exhibition at the Hayward Gallery, each year group's STEAM this year will be entitled with the salutation, 'Dear...' followed by their STEAM focus.

After the success of the transport STEAM units last year, our 23/24 STEAM theme is Dear Earth. We will be forming exciting employer partnerships to make our learning relevant and meaningful.

In Reception, we follow the Early Years non-statutory curriculum guidance called 'Development Matters'

Prime Areas:

- Personal Social Emotional Development
 - Communication and Language
 - Physical Development

Specific Areas:

- Literacy – Reading and Writing
 - Mathematics
- Understanding the World
- Expressive Arts and Design



Characteristics of Effective Learning

It's not just about what your children are learning, but how they learn.

- Playing and Exploring
- Active Learning
- Creative and Critical Thinking



Phonics - Learning to read

- The children are taught reading and writing through daily whole-class phonics sessions plus follow-up focus activities and provision within the learning environment.
- We teach phonics using a complete systematic synthetic phonics programme (SSP) called 'Little Wandle Letters and Sounds Revised'.
- Children learn new sounds and non-decodable 'Tricky Words' each week. We then practise blending the sounds together to read words, captions and simple sentences.
- The children also learn to form the letters using non-cursive letter formation.



Parent workshop
TBC





- ## READING AT HOME

- 
- The logo is a circular emblem with an orange background. At the top, there is a white line-art illustration of a bird, possibly a sparrow or similar small bird, facing right. Below the bird, the text "Little Wandle" is written in a white, cursive-style font. Underneath that, the words "LETTERS AND SOUNDS" are written in a large, bold, white, sans-serif, all-caps font. Below this, three small white stars are arranged horizontally. Under the stars, the word "REVISED" is written in a bold, white, sans-serif, all-caps font. In the bottom right corner of the orange circle, the letters "TM" are written in a small, white, sans-serif font.

Reading At Home - Phonics



- Each week, during a group Guided Reading session, your child will read a decodable phonics book with an adult. The same book will be sent home for your child to read to you.
- After reading with your child, the adult in school will write a comment in your child's Monkey Book (reading record).
- Phonics books will be changed by school once per week.
- Please read with your child every day and write a comment in their Monkey Book once per week.
- Please keep your child's Monkey Books in their school book bag and bring the bag in every day.



Maths

- Maths lessons take place daily and maths activities happen in the environment.
- Mastery-style teaching with a continued focus on fluency and reasoning.
- Use of oracy and sentence stems to aid children in talking about maths.
- Daily opportunities for counting and fluency practice



Parent workshop: DATE



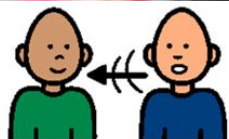
Mathematicians
learn together



Mathematicians
explore



Oracy



#GetTalkingInClass

Skills



Physical



Linguistic



Cognitive



Social and
Emotional

The right to be heard



Ask me what this means...

HORRIANO
PRIMARY SCHOOL



Agree



Disagree



Vocabulary



The School Day - AM

- 8:50 - 8:55am – Your child arrives at school. Morning settling in routine
- 9:00am – Register and phonics carpet session
- 9:20am – Independent learning time and adult-focused activities
- 10:15am – Carpet session
- 10:30am – Whole-class snack time
- 10:45am - Independent learning time and adult-focused activities
- 11:40am – Tidy up time
- 11:50am - Carpet session
- 12:15pm – Lunch and then playtime



The School Day - PM

- 1:30pm – Register and carpet session
- 1:45pm – Independent learning time and adult-focused activities
- 3:00pm – Tidy up time/group guided reading (one group per day)
- 3:10pm – Get ready for home time
- 3:15pm – Storytime
- 3:30pm – Home time



Physical Education

- Reception P.E. takes place every Wednesday
- PE kit not required at the moment so please have appropriate footwear on all days



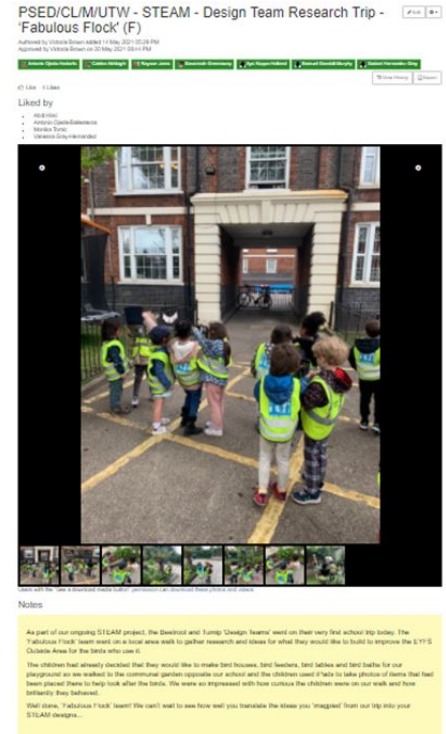
Abdi (Assistant Sports Coach)
Carmen (Sports Coach)

Reception Baseline Assessment

- All Reception children have a statutory baseline assessment (RBA) when they start school.
- The RBA is done by your child's teacher in a quiet space.
- It is split into two sections - Maths & Literacy, Communication and Language (LCL). It last approximately 10 minutes per section.
- The purpose of the assessment is to provide the starting point that will help parents understand how well schools support their pupils to progress between Reception and Year 6.

Tapestry

- Tapestry is an online learning journal that records children's learning experiences at school and at home
- We post photos, videos and comments to share what your child has been learning and their progress
- You can add your own entries to share what your child has been doing at home
- Download the Tapestry app or log into the website - www.tapestryjournal.com
- Home learning challenges will be set using Tapestry
- You should have received an activation email from Tapestry Journal.
- All parents/carers have been set up with an account - currently one parent/carer per child. If you would like more than one relative account, please let us know.



Clothing

- Please dress your child in clothes that they can easily take on and off by themselves
- Children should wear well-fitting and sturdy shoes or trainers that allow them to climb, run and use the playground equipment safely. No laces please unless they can tie them themselves.
- We play outside everyday and in all weathers! Children should therefore also have waterproof coat with a hood. You can also send in wellies
- Playing can be very messy business – please dress your child in old play clothes
- Please bring slippers and a bag of spare clothes to keep at school
- Please write your child's name in their clothes, coat and shoes

What does your child need to bring to school?

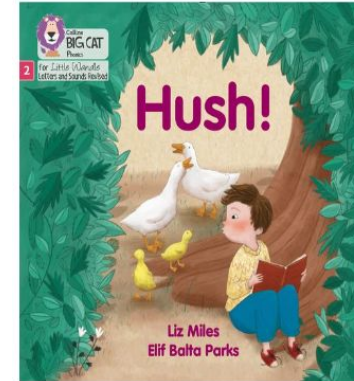
Phonics book



Named water bottle (sent home every Friday)



Book bag



Reading for pleasure book



Monkey Book (reading record)

Kentish Town Community and the Heroes Who Help Us

Our year group unit this term is 'Kentish Town Community and the Heroes Who Help Us'. Through this we will learn about what makes each of us unique; based on what we like, who our families are, and where we live. We will start our learning by meeting and finding out about the roles of different people in our school. The children will then explore the wider community, meeting local heroes who help us and learning about the different festivals we all celebrate.

We are looking to involve parents/carers in our learning this term i.e. reading a story in your home language, talking to the children about your job, sharing with us about a festival you celebrate as a family. Please do speak to your child's teacher know if you are keen to get involved.



Questions?